



# MONTHLY MEMBERSHIP PROGRESS REPORT

District 2 T1

Results as of: 05/31/2018

GMT: JOE AL PICONE

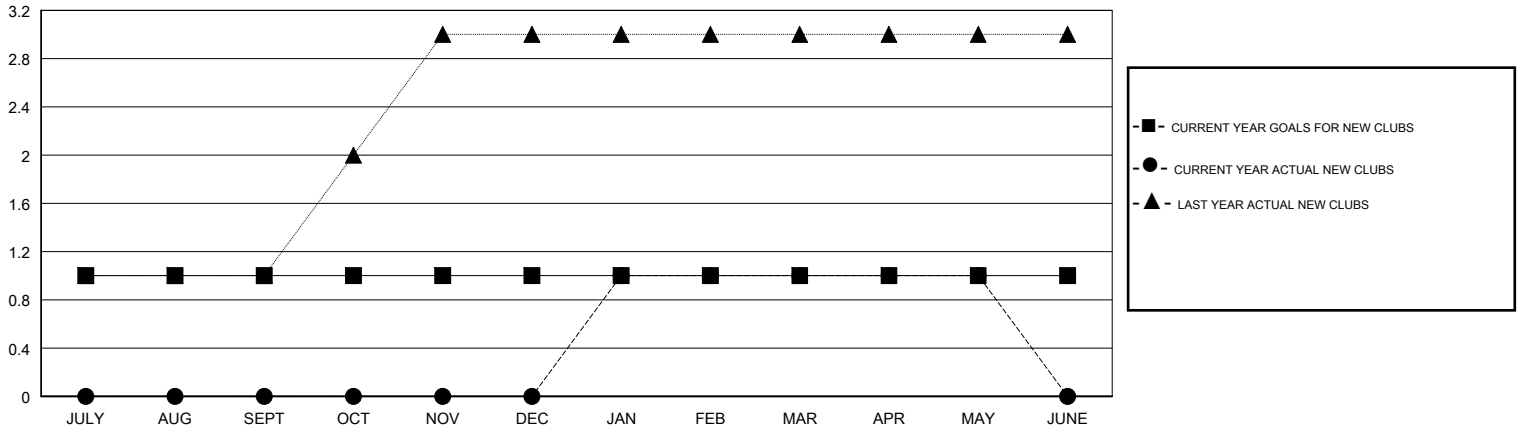
LOCATION TEXAS

GMT CA

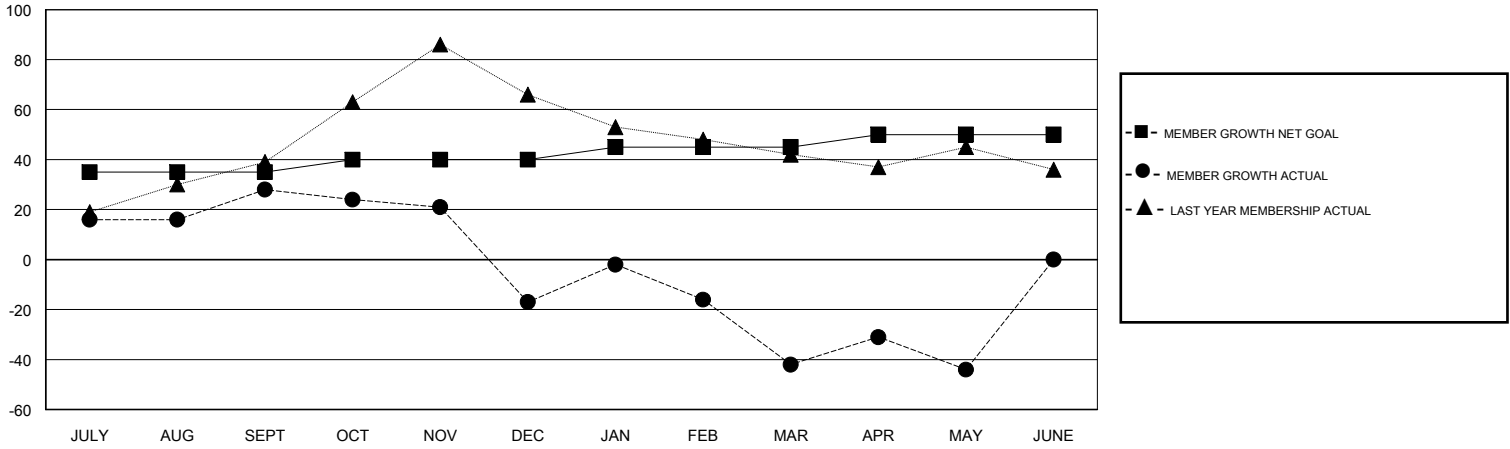
Clubs			
RESULTS FOR 2017-2018			
QUARTER	NEW CLUB GOAL	NEW CLUBS	DROPPED CLUBS
JULY/AUG/SEPT	1	0	0
OCT/NOV/DEC	0	0	1
JAN/FEB/MAR	0	1	1
APR/MAY/JUNE	0	0	0

Members			
RESULTS FOR 2017-2018			
QUARTER	MEMBER GROWTH NET GOAL	MEMBER GROWTH ACTUAL	DROPPED MEMBERS ACTUAL (including transfers)
JULY/AUG/SEPT	35	76	44
OCT/NOV/DEC	5	19	64
JAN/FEB/MAR	5	44	66
APR/MAY/JUNE	5	30	30

GOALS AND ACTUAL NEW CLUBS CUMULATIVE



GOALS AND ACTUAL MEMBERS CUMULATIVE



DROPPED CLUBS: 2	21 CLUBS OF 40 ADDED 1 OR MORE NEW MEMBERS	<u>GENDER DISTRIBUTION</u>	
DROPPED MEMBERS		MALE	877 (70.84%)
DECEASED	19	FEMALE	361 (29.16%)
CLUB CANCELLED	33	Women Percentage Fiscal Year Goal: 5%	
OTHER	152	TOTAL FAMILY UNIT MEMBERS	148
TOTAL	204	FAMILY MEMBERS PAYING HALF DUES	74

[CLICK HERE FOR CUMULATIVE MEMBERSHIP DATA](#)